

1SP0350V2B0-45

Target Data Sheet

High-performance, plug-and-play single-channel IGBT driver based on SCALE™-2 technology for IGBT modules and Press-Packs in 2-level, 3-level and multilevel converter topologies

Abstract

The SCALE™-2 plug-and-play driver 1SP0350V2B0-45 is a compact single-channel intelligent gate driver with a fiber-optic interface designed especially for HVDC breaker applications for 4500V Press-Packs, IGBT modules and IEGTs. The driver provides a higher on-state voltage of 19V, thus increasing the current capability of the module.

All components required for driving, such as an isolated DC/DC converter, short-circuit protection, Dynamic Advanced Active Clamping as well as supply voltage monitoring are included on the driver.

The driver's secondary side is electrically isolated from its primary side and meets the requirements of 4500V IGBT applications.

The turn-on and turn-off gate resistors as well as the auxiliary gate capacitor are not assembled in order to provide maximum flexibility. They must be assembled by the user before start of operation.

For drivers adapted to other types of high-power and high-voltage IGBT modules, refer to:

www.power.com/igbt-driver/go/Plug-and-Play

Features

- ✓ Plug-and-play solution
- ✓ For 2-level, 3-level and multilevel topologies
- ✓ Fiber-optic links
- ✓ Duty cycle 0...100%
- ✓ Dynamic Advanced Active Clamping DA²C
- ✓ IGBT short-circuit protection
- ✓ Monitoring of supply voltage
- ✓ Extremely reliable; long service life
- ✓ Shortens application development time
- ✓ Lead-free

Applications

- ✓ HVDC
- ✓ Flexible AC transmission systems (FACTS)
- ✓ Railroad power supplies
- ✓ Light rail vehicles
- ✓ Traction
- ✓ Medium-voltage converters
- ✓ Industrial drives
- ✓ Wind-power converters
- ✓ Medical applications
- ✓ And many others

Target Datasheet

Safety Notice!

The data contained in this data sheet is intended exclusively for technically trained staff. Handling all high-voltage equipment involves risk to life. Strict compliance with the respective safety regulations is mandatory!

Any handling of electronic devices is subject to the general specifications for protecting electrostatic-sensitive devices according to international standard IEC 60747-1, Chapter IX or European standard EN 100015 (i.e. the workplace, tools, etc. must comply with these standards). Otherwise, this product may be damaged.

Important Product Documentation

This data sheet contains only product-specific data. For a detailed description, must-read application notes and common data that apply to the whole series, please refer to the "Description & Application Manual for 1SP0350V SCALE-2 IGBT Drivers" on www.power.com/igbt-driver/go/1SP0350V.

The gate resistors as well as the auxiliary gate capacitor on this gate driver are not assembled in order to provide maximum flexibility. For the values required for specific IGBT modules, refer to the paragraph on "Gate Resistor and Auxiliary Gate Capacitor Assembly". Use of gate resistors and gate auxiliary capacitors other than those specified may result in failure.

Mechanical Dimensions

Dimensions: Refer to the relevant "Description and Application Manual"

Mounting principle: Electrical connection to IGBT module via cables

Fiber-Optic Interfaces

Interface	Remarks	Part type #
Drive signal input	Fiber-optic receiver (Notes 1, 2)	HFBR-2522ETZ
Status output	Fiber-optic transmitter (Notes 1, 3)	AFBR-1529Z

Electrical Connectors

Interface	Remarks	Part type #
Power supply connector X1	On-board connector (Note 4)	CIM039P5
IGBT module connectors		
X2GE	On-board connectors (Note 5)	71922-120LF
X2G, X2E and X2C	On-board connectors (Note 6)	PCB-1M4

Target Datasheet

Absolute Maximum Ratings

Parameter	Remarks	Min	Max	Unit
Supply voltage V_{DC}	VDC to GND	0	16	V
Average supply current I_{DC}	Note 7		t.b.d.	mA
SO current	Failure condition, total current (Note 8)		20	mA
Gate output power	$T_a \leq 70^\circ\text{C}$		2.5	W
	$T_a \leq 85^\circ\text{C}$		1.8	W
Switching frequency f	Note 9		100	Hz
Gate peak current I_{out}	Note 10	-50	+50	A
External gate resistance	Turn-on and turn-off (Note 11)	0.3		Ω
DC-link voltage	Switching operation (Note 12)		3400	V
	Off state (Note 13)		4000	V
Test voltage (50Hz/1min.)	Primary to secondary (Note 14)		10.2	kV_{eff}
$ dV/dt $	Rate of change of input to output voltage		35	$\text{kV}/\mu\text{s}$
Operating voltage	Collector-emitter voltage		4500	V_{peak}
Operating temperature		-40	+85	$^\circ\text{C}$
Storage temperature		-40	+85	$^\circ\text{C}$

Recommended Operating Conditions

Power Supply	Remarks	Min	Typ	Max	Unit
Supply voltage V_{DC}	VDC to GND	14.5	15	15.5	V

Target Datasheet

Electrical Characteristics

All data refer to +25°C and $V_{DC} = 15V$ unless otherwise specified

Power Supply	Remarks	Min	Typ	Max	Unit
Supply current I_{DC}	Without load		125		mA
Power Supply Monitoring	Remarks	Min	Typ	Max	Unit
Supply threshold V_{DC}	Primary side, clear fault	11.6	12.6	13.6	V
	Primary side, set fault (Note 15)	11.0	12.0	13.0	V
Monitoring hysteresis	Primary side, set/clear fault	0.35			V
Supply threshold $V_{iso}-V_{ee}$	Clear fault	11.6	12.6	13.6	V
	Set fault (Note 16)	11.0	12.0	13.0	V
Monitoring hysteresis	Set/clear fault	0.35			V
Supply threshold $V_{ee}-V_{COM}$	Clear fault		5.15		V
	Set fault (Note 16)		4.85		V
Monitoring hysteresis	Set/clear fault		0.3		V
IGBT Short-circuit Protection ¹	Remarks	Min	Typ	Max	Unit
Static V_{CE} -monitoring threshold	Between auxiliary terminals (Note 17)		550		V
Response time	DC-link voltage = 3400V (Note 18)		9.1		µs
	DC-link voltage = 2800V (Note 18)		9.4		µs
	DC-link voltage = 500V (Note 18)		10.6		µs
Delay to IGBT turn-off t_{CSHD}	After the response time (Note 19)		0.2		µs
Timing Characteristics	Remarks	Min	Typ	Max	Unit
Turn-on delay $t_{d(on)}$	Note 20		140		ns
Turn-off delay $t_{d(off)}$	Note 20		110		ns
Output rise time $t_{r(out)}$	G to E (Note 21)		13		ns
Output fall time $t_{f(out)}$	G to E (Note 21)		30		ns
Transmission delay of fault state	Note 22		90		ns
Delay to clear fault state $t_{(block)}$	After IGBT short circuit (Note 23)		9		µs
Acknowledge delay time $t_{d(ack)}$	Note 24		220		ns
Acknowledge pulse width $t_{(ack)}$	On host side	400	700	1050	ns

¹ Note that IGBT short-circuits are not recommended with a gate-voltage of 19V. A safe IGBT short-circuit handling cannot be guaranteed.

Target Datasheet

Gate Output	Remarks	Min	Typ	Max	Unit
Turn-on gate resistor $R_{g(on)}$	Note 25			not assembled	Ω
Turn-off gate resistor $R_{g(off)}$	Note 25			not assembled	Ω
Auxiliary gate capacitor C_{ge}	Note 25			not assembled	nF
Gate voltage at turn-on	Note 26		19		V
Gate-voltage at turn-off	Without load (Note 26)		-8		V
	$P_{DC/DC} = 2.5W$ (Note 26)		-7.4		V

Footnotes to the Key Data

- 1) The transceivers required on the host controller side are not supplied with the gate driver. It is recommended to use the same types as used in the gate driver. For product information refer to www.power.com/igbt-driver/go/fiberoptics.
- 2) The recommended transmitter current at the host controller is 6mA. A higher current may increase jitter or delay at turn-off.
- 3) The typical transmitter current at the gate driver is 6mA. In case of supply undervoltage, the minimum transmitter current at the gate driver is 4.4mA: this is suitable for adequate plastic optical fibers with a length of more than 10 meters.
- 4) This refers to the manufacturer ordering number, see www.power.com/igbt-driver/go/sauro. Refer to the "Description & Application Manual for 1SP0350V SCALE-2 IGBT Drivers" for more information.
- 5) This refers to the manufacturer ordering number, see www.power.com/igbt-driver/go/fci. X2GE can be used with X2C to connect 1SP0350V to the IGBT module.
- 6) This refers to the manufacturer ordering number, see www.power.com/igbt-driver/go/ninigi. X2G, X2E and X2C can be used to connect 1SP0350V to the IGBT module.
- 7) If the specified value is exceeded, this indicates a driver overload. It should be noted that the driver is not protected against overload.
- 8) Including current flowing into the on-board pull-up resistor of 10k Ω .
- 9) The maximum switching frequency must additionally be limited by the maximum allowed gate output power.
- 10) The gate current must be limited to the given values by the gate resistors on the driver and the load.
- 11) The gate resistors are not assembled on this IGBT gate driver. They must be assembled by the user according to the paragraph on "Gate Resistor and Auxiliary Gate Capacitor Assembly".
- 12) This limit is due to active clamping under switching conditions. Refer to the "Description & Application Manual for 1SP0350V SCALE-2 IGBT Drivers".
- 13) Due to the Dynamic Active Advanced Clamping Function (DA²C) implemented on the driver, the DC-link voltage can be increased in the off-state condition (e.g. after emergency shut-down). This value is only valid when the IGBTs are in the off state (not switching). The time during which the voltage can be applied should be limited to short periods (< 60 seconds). Refer to the "Description & Application Manual for 1SP0350V SCALE-2 IGBT Drivers".
- 14) HiPot testing (= dielectric testing) must generally be restricted to suitable components. This gate driver is suited for HiPot testing. Nevertheless, it is strongly recommended to limit the testing time to 1s slots. Excessive HiPot testing at voltages much higher than 3182V_{AC,rms} may lead to insulation degradation. No degradation has been observed over 1min. testing at 10.2kV_{eff}. The transformer of every production sample shipped to customers has undergone 100% testing at the given value for 1s.
- 15) Undervoltage monitoring of the primary-side supply voltage (VDC to GND). If the voltage drops below this limit, a fault is transmitted to the power connector's SO output.
- 16) Undervoltage monitoring of the secondary-side supply voltage (Viso to Vee and Vee to COM which correspond with the approximate turn-on and turn-off gate-emitter voltages). If the corresponding voltage drops below this limit on 1SP0350V the IGBT is switched off and a fault is transmitted to the status output.
- 17) A dynamic V_{CE} protection is implemented on the driver. The maximum allowed V_{CE} voltage at turn-on is dynamically adjusted in order to better fit to the IGBT characteristics at turn-on. At the end of the turn-on process the given static value applies.

Target Datasheet

- 18) The resulting pulse width of the direct output of the gate drive unit for short-circuit type I (excluding the delay of the gate resistors) is the sum of the response time plus the delay to IGBT turn-off (only valid if jumper J1 is set at the position "2-level").
- 19) The turn-off event of the IGBT is delayed by the specified time after the response time if the jumper J1 is set at the position "2-level". If the jumper J1 is set at the position "3-level", the driver will only report a fault condition and not turn off the IGBT.
- 20) Including the delay of the external fiber-optic links (cable length: 1m). Measured from the transition of the turn-on or turn-off command at the optical transmitter on the host controller side to the direct output of the gate drive unit (excluding the delay of the gate resistors).
- 21) Output rise and fall times are measured between 10% and 90% of the nominal output swing. The values are given for the driver side of the gate resistors with 4.7Ω/270nF load. The time constant of the output load in conjunction with the present gate resistors leads to an additional delay at their load side.
- 22) Delay of external fiber-optic links. Measured from the driver secondary side (ASIC output) to the optical receiver on the host controller with a 1m cable.
- 23) Measured on the host side. The fault status is stretched by the given value after the IGBT short-circuit has been turned off.
- 24) Including the delay of the external fiber-optic links (cable length: 1m). Measured from the transition of the turn-on or turn-off command at the optical transmitter on the host controller side to the transition of the acknowledge signal at the optical receiver on the host controller side.
- 25) The gate resistors and the auxiliary gate capacitor are not assembled on this IGBT gate driver. They must be assembled by the user according to the paragraph on "Gate Resistor and Auxiliary Gate Capacitor Assembly".
- 26) The driver secondary-side voltage is split into two distinct voltages on the driver. The first one is the turn-on voltage which is regulated at about 19V. The difference between the total secondary-side voltage and the turn-on voltage is the turn-off voltage which is not regulated and mainly dependent on the driver input voltage VDC and the DC/DC converter power.

Target Datasheet

Gate Resistor and Auxiliary Gate Capacitor Assembly

The turn-on and turn-off gate resistors as well as the auxiliary gate capacitor of 1SP0350V drivers are adapted to their respective IGBT modules.

Recommended gate resistors (R148, R149, R138 and R139): PR02 / 2W / 5% from Vishay

Recommended auxiliary gate capacitor (C106): 1206 / X7R / 25V / 5%

Assembly Drawing

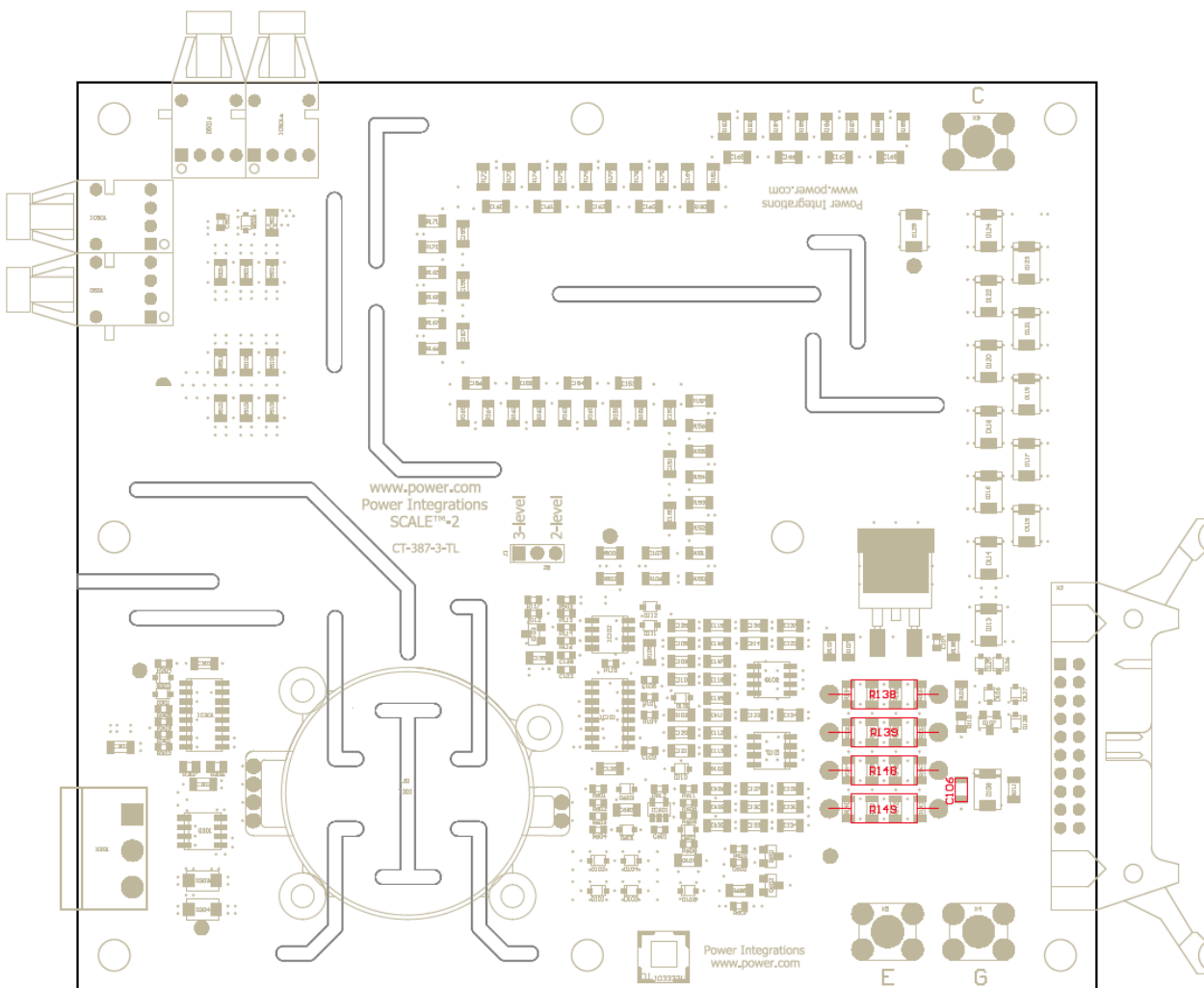


Fig. 1 Assembly drawing of 1SP0350V with highlighted gate resistors and auxiliary gate capacitor

Note that the wires of the gate resistors should not project more than 1mm after soldering (excess length at bottom side). Furthermore, a minimum distance of 1mm must be maintained between the gate resistor body and the PCB.

Target Datasheet

RoHS Statement

On the basis of Annexes II and III of European Directive 2011/65/EC of 08 June 2011 on the restriction of the use of certain hazardous substances in electrical and electronic equipment (RoHS), we hereby state that the products described in this datasheet do not contain lead (Pb), mercury (Hg), hexavalent chromium (Cr VI), cadmium (Cd), polibrometo of biphenyl (PBB) or polibrometo diphenyl ether (PBDE) in concentrations exceeding the restrictions set forth in Annex II of 2011/65/EC with due consideration of the applicable exemptions as listed in Annex III of 2011/65/EC.

Legal Disclaimer

The statements, technical information and recommendations contained herein are believed to be accurate as of the date hereof. All parameters, numbers, values and other technical data included in the technical information were calculated and determined to our best knowledge in accordance with the relevant technical norms (if any). They may base on assumptions or operational conditions that do not necessarily apply in general. We exclude any representation or warranty, express or implied, in relation to the accuracy or completeness of the statements, technical information and recommendations contained herein. No responsibility is accepted for the accuracy or sufficiency of any of the statements, technical information, recommendations or opinions communicated and any liability for any direct, indirect or consequential loss or damage suffered by any person arising therefrom is expressly disclaimed.

Target Datasheet

Ordering Information

Our international terms and conditions of sale apply.

Interface	Power Integrations Driver Type #	Related IGBT
Fiber-Optic Interface	1SP0350V2B0-45	4500V IGBT modules

Product home page: www.power.com/igbt-driver/go/1SP0350V

Refer to www.power.com/igbt-driver/go/nomenclature for information on driver nomenclature.

Information about Other Products

For other drivers, product documentation, and application support:

Please click: www.power.com

Target Datasheet

Power Integrations Sales Offices

WORLD HEADQUARTERS

5245 Hellyer Avenue
 San Jose, CA 95138 USA
 Tel: +1-408-414-9200
 Fax: +1-408-414-9765
 Email: usasales@power.com

AMERICAS WEST

5245 Hellyer Avenue
 San Jose, CA 95138 USA
 Tel: +1-408-414-8778
 Fax: +1-408-414-3760
 Email: usasales@power.com

GERMANY (AC-DC/LED Sales)

Lindwurmstrasse 114
 80337 München, Germany
 Tel: +49-89-5527-39100
 Fax: +49-89-1228-5374
 Email: eurosales@power.com

INDIA (Mumbai)

Unit: 106-107, Sagar Tech Plaza-B
 Sakinaka, Andheri Kurla Road
 Mumbai, Maharashtra 400072 India
 Tel 1: +91-22-4003-3700
 Tel 2: +91-22-4003-3600
 Email: indiasales@power.com

JAPAN

Kosei Dai-3 Bldg.
 2-12-11, Shin-Yokohama, Kohoku-ku
 Yokohama-shi, Kanagawa
 Japan 222-0033
 Tel: +81-45-471-1021
 Fax: +81-45-471-3717
 Email: japansales@power.com

TAIWAN

5F, No. 318, Nei Hu Rd., Sec. 1
 Nei Hu Dist.
 Taipei, 114 Taiwan
 Tel: +886-2-2659-4570
 Fax: +886-2-2659-4550
 Email: taiwansales@power.com

AMERICAS EAST

7360 McGinnis Ferry Road
 Suite 225
 Suwannee, GA 30024 USA
 Tel: +1-678-957-0724
 Fax: +1-678-957-0784
 Email: usasales@power.com

CHINA (Shanghai)

Room 2410, Charity Plaza
 No. 88 North Caoxi Road
 Shanghai, 200030 China
 Tel: +86-21-6354-6323
 Fax: +86-21-6354-6325
 Email: chinasales@power.com

GERMANY (IGBT Driver Sales)

HellwegForum 1
 59469 Ense, Germany
 Tel: +49-2938-64-39990
 Email: igbt-driver.sales@power.com

INDIA (New Dehli)

#45, Top Floor
 Okhla Industrial Area, Phase - III
 New Dehli, 110020 India
 Tel 1: +91-11-4055-2351
 Tel 2: +91-11-4055-2353
 Email: indiasales@power.com

KOREA

RM602, 6FL, 22
 Teheran-ro 87-gil, Gangnam-gu
 Seoul, 06164 Korea
 Tel: +82-2-2016-6610
 Fax: +82-2-2016-6630
 Email: koreasales@power.com

UNITED KINGDOM

Bulding 5, Suite 21
 The Westbrook Centre
 Milton Road
 Cambridge, CB4 1YG United Kingdom
 Tel: +44-7823-557-484
 Email: eurosales@power.com

AMERICAS CENTRAL

333 Sheridan Road
 Winnetka, IL 60093 USA
 Tel: +1-847-721-6293
 Email: usasales@power.com

CHINA (Shenzhen)

17/F, Hivac Building, No 2
 Keji South 8th Road, Nanshan District
 Shenzhen, 518057 China
 Tel: +86-755-8672-8689
 Fax: +86-755-8672-8690
 Email: chinasales@power.com

INDIA (Bangalore)

#1, 14th Main Road
 Vasanthangar
 Bangalore, 560052 India
 Tel 1: +91-80-4113-8020
 Tel 2: +91-80-4113-8028
 Fax: +91-80-4113-8023
 Email: indiasales@power.com

ITALY

Via Milanese 20
 20099 Sesto San Giovanni (MI), Italy
 Tel: +39-02-4550-8708
 Email: eurosales@power.com

SINGAPORE

51 Newton Road
 #19-01/05 Goldhill Plaza
 Singapore, 308900
 Tel 1: +65-6358-2160
 Tel 2: +65-6358-4480
 Fax: +65-6358-2015
 Email: singaporesales@power.com