

Application Note AN-91

BridgeSwitch Family

Triangular PCB vs. Slotted Linear PCB Configuration for Three-Phase Inverter Applications

Introduction

For 3-phase inverter applications, each InSOP-24C surface mount package dissipates a third of the total inverter losses. The heat distribution allows the construction of a motor drive without an external heat sink. Two exposed pads facilitate heat transfer from the power switches to the printed circuit board (PCB). They are marked HB and HD in Figure 1.

The thermal performance is affected by the placement of the devices, the distance between them, the size of the copper-clad areas connected to the exposed pads, and the thickness of the copper used for heat sinking. In the PCB configurations previously evaluated for the whitepaper, "Impact of Printed Circuit Board Layout on Device Temperature in 3-Phase Inverters Using BridgeSwitch" (<https://motor-driver.power.com/design-support/articles/impact-of-printed-circuit-board-layout-on-device-temperature-in-3-phase-inverters-using-bridgeswitch/>), the results show an increase in the device case temperatures for the linear PCB configuration as seen in Figure 3. Due to the heat converging at the center, the middle device exhibits a higher case temperature compared to the adjacent devices.

The linear PCB configuration offers a smaller and more compact PCB layout that is desirable for some applications. Slots were added between the BridgeSwitch devices to maximize the advantage of the linear device placement resulting in the slotted linear PCB configuration in Figure 4. This addition will prevent the heat from the adjacent devices from affecting the temperature of the middle IC.

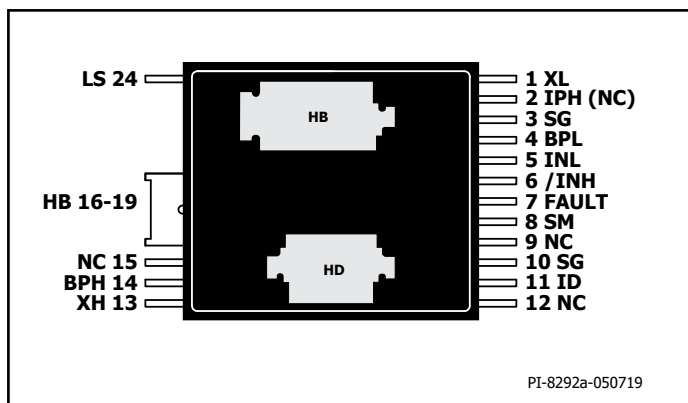


Figure 1. BridgeSwitch InSOP-24C (Bottom View).

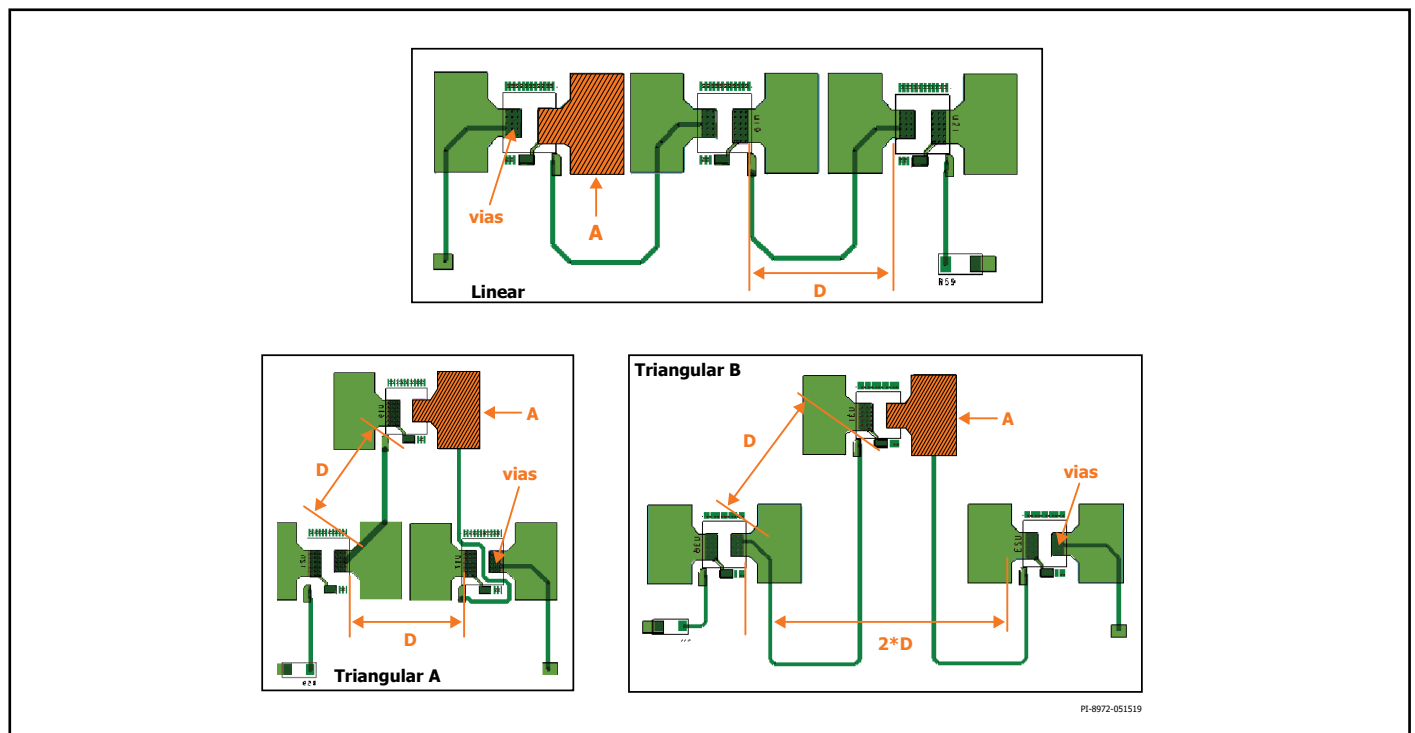


Figure 2. Linear, Triangular A, and Triangular B Device Configurations.

Note: A = PCB copper area, D = distance between devices

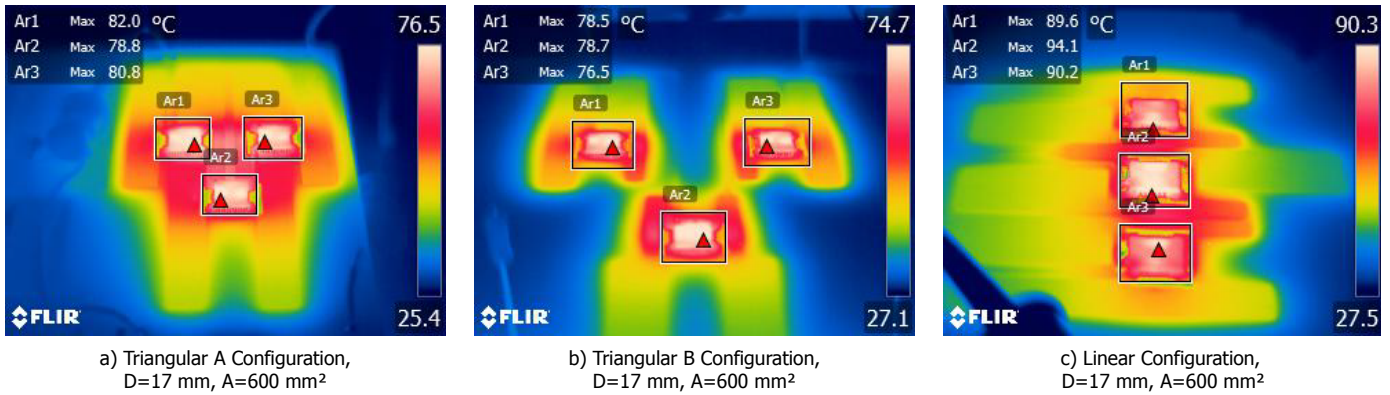


Figure 3. Thermal Device Scans (Triangular A, Triangular B, and Linear Configurations).

Scope

This application note compares the thermal performance of the triangular PCB configuration to the slotted linear PCB configuration with regards to case temperature rise above ambient temperature and temperature variations between adjacent BridgeSwitch devices using BridgeSwitch reference design boards.

It includes the following sections:

- Layout Revision
- Test Conditions
- Test Results
 - Triangular PCB Configuration
 - Slotted Linear PCB Configuration
 - PCB Configuration Comparison
- Conclusion

Related Technical Documents

- Impact of Printed Circuit Board Layout on Device Temperature in 3-Phase Inverters Using BridgeSwitch
- AN-83 – BridgeSwitch Design Tips, Techniques, and Troubleshooting Guide
- RDR-853 – 300 W High Thermal Performance 3-Phase Inverter Using BridgeSwitch Motor Driver and LinkSwitch-TN2

All documents are available for download at [www.power.com: https://motor-driver.power.com/products/bridgeswitch-family/bridgeswitch/](https://www.power.com/motor-driver.power.com/products/bridgeswitch-family/bridgeswitch/).

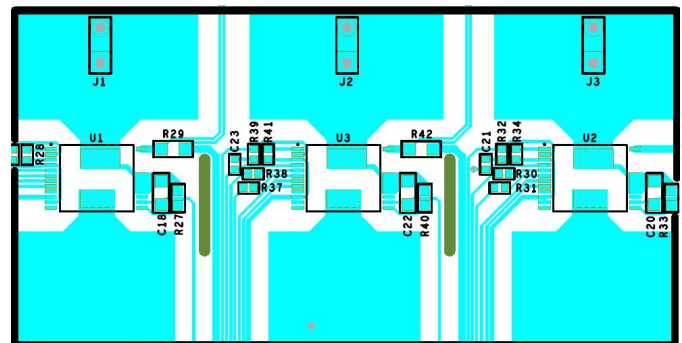


Figure 4. Slotted Linear Device Configuration.

Note: The dark green lines correspond to the PCB slots.

Layout Revision

A 300 W 3-phase inverter reference design, the RD-853 board, was used to collect the triangular PCB configuration data. The layout is shown in Figure 5. For heat sinking, it makes use of a 34.53 cm² copper-clad area on the top layer and 49.24 cm² on the bottom layer resulting in a total copper area of 83.77 cm². Both layers connect through thermal vias placed directly underneath the exposed pads of the InSOP-24C package. There is a distance of approximately 25 mm between the devices.

The RD-853 layout was revised to add slots that are 1.50 mm in width and 12.93 mm in length between adjacent ICs, resulting in the slotted linear PCB configuration shown in Figure 6. The 25 mm approximate distance between devices was maintained to provide accurate comparison data. With the copper area trimmed down, a 25.00 cm² copper-clad area on the top layer and 36.93 cm² on the bottom layer

resulting in a 61.93 cm² effective copper area – about 20 cm² less than the preceding triangular layout revision remains on the board.

This decrease in the copper area is based on the results of a study wherein a reduction in the copper area was gradually made until the device temperature difference between the two configurations is approximately equal. Further reduction in the copper area would result in a considerable increase in the case temperatures for the slotted linear configuration, significantly increasing its difference compared to the triangular configuration. The top and bottom copper layers connect through thermal vias placed underneath the exposed pads of each device. The revised layout is shown in Figure 6.

For both boards, the PCB material used is FR4 laminate with 2 oz of copper and a thickness of 1.2 mm. For both layout revisions, the thermal via connecting the top and bottom copper-clad areas have an outer diameter of 0.6 mm and an inner diameter of 0.3 mm with plating.

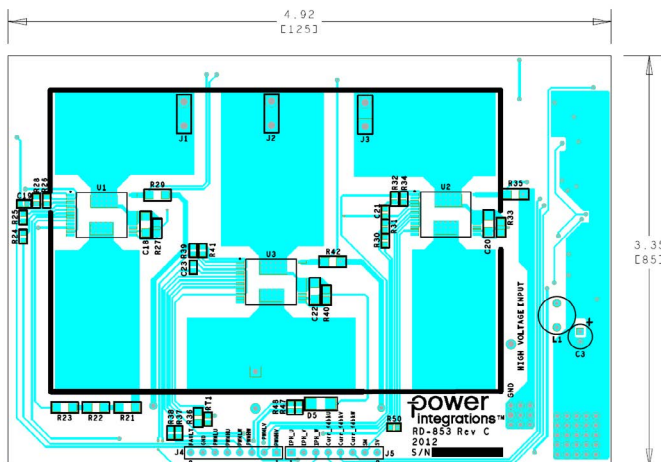


Figure 5. Triangular PCB Configuration Layout (125 mm x 85 mm).

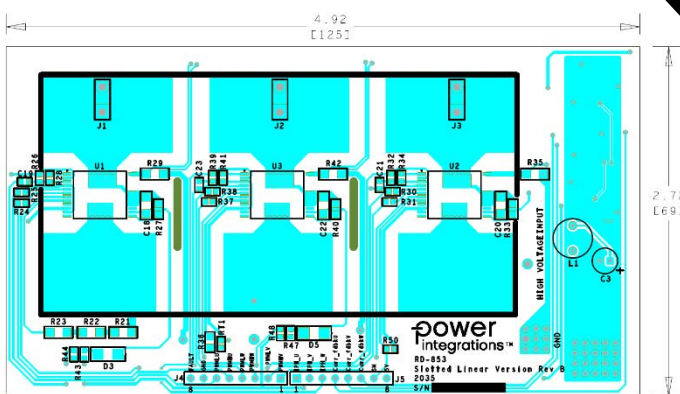
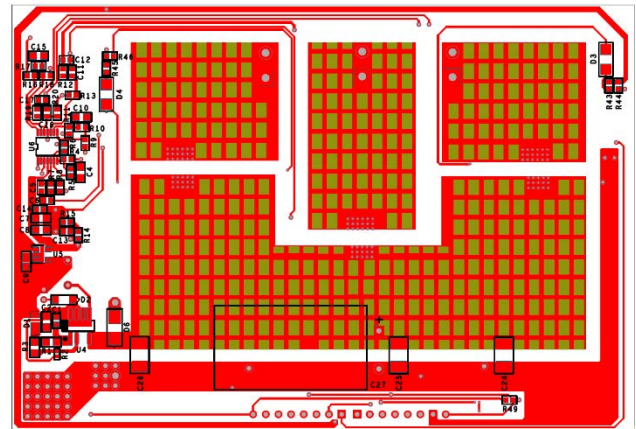
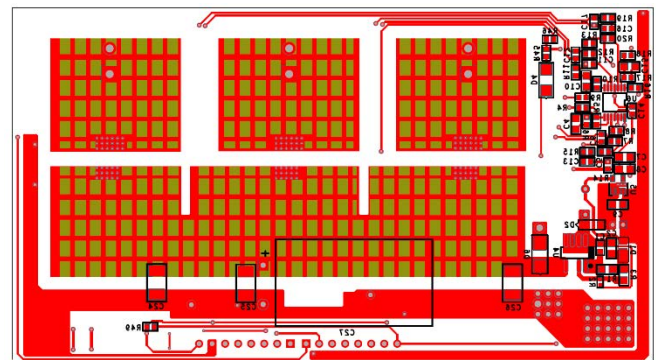


Figure 6. Slotted Linear PCB Configuration Layout (125 mm x 69 mm).



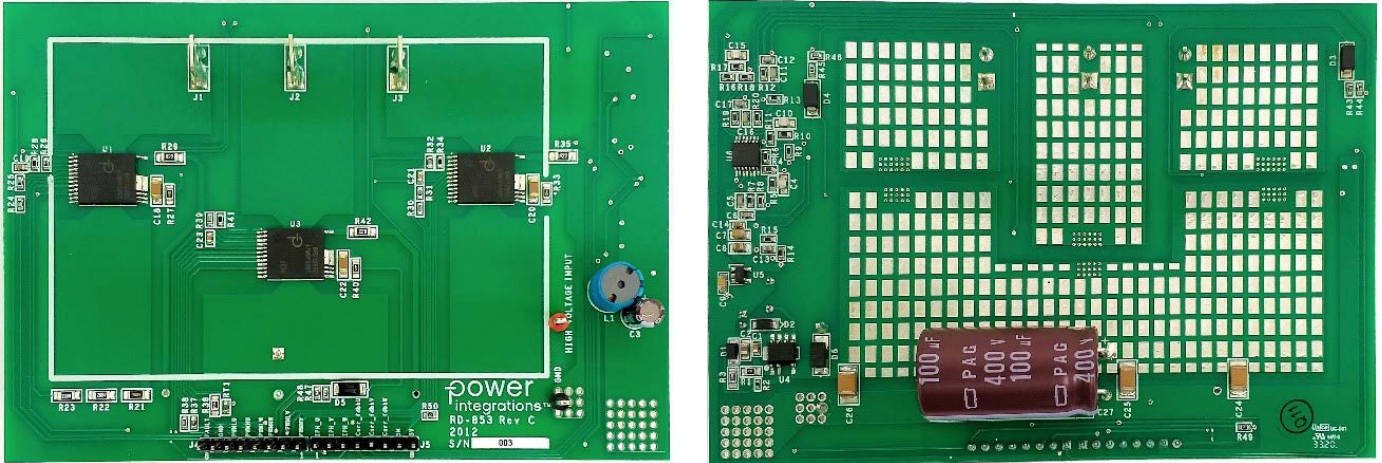


Figure 7. Triangular PCB Configuration Board (125 mm x 85 mm).

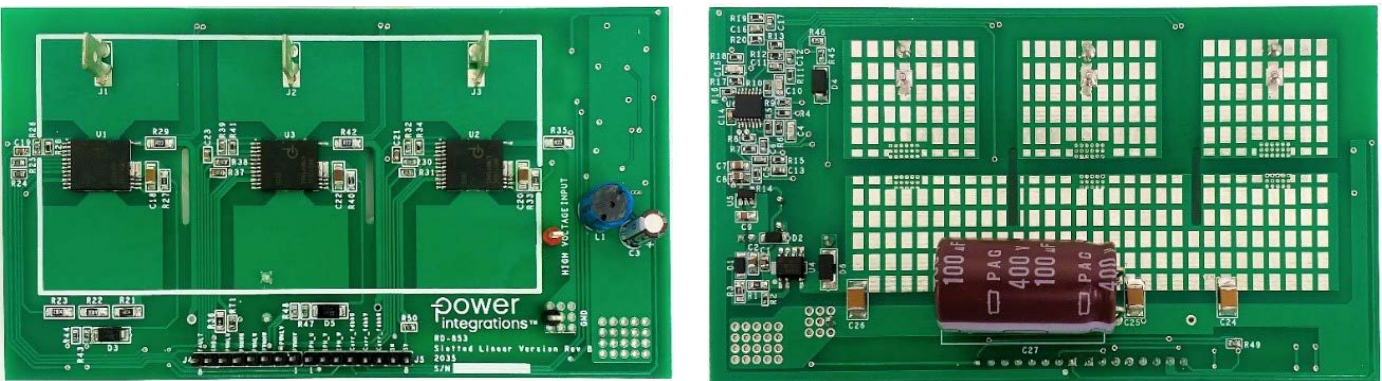


Figure 8. Slotted Linear PCB Configuration Board (125 mm x 69 mm).

Test Conditions

Both configurations operate at the following test conditions:

- Input Voltage: 340 V_{DC}
- Average Phase RMS Current:
 - 350 mA_{RMS} at 100 W Inverter Output Power
 - 660 mA_{RMS} at 200 W Inverter Output Power
 - 1000 mA_{RMS} at 300 W Inverter Output Power
- PWM Carrier Frequency: 12 kHz
- Output Speed: 5000 RPM
- Control Scheme: FOC
- Modulation Type: 3-phase Modulation

The auxiliary circuit, +5 V linear regulator, and input diode were disabled to solely reflect the inverter temperature by depopulating components U4, U5, and D6. An external +5 V_{DC} supply was used to power the microcontroller and provide a reference voltage for the current sense amplifier. During tests using external supply voltage mode, the low-side and high-side gate drives require an additional +17 V_{DC} supply.

External supply operation is optional for applications that require lower inverter no-load input power or operate at elevated ambient temperatures. Resistors R43, R44, R45, R46, R47, R48, and diodes D3, D4, and D5 are responsible for providing external supply to the BPL and BPH pin through device U4. If deactivated, the BridgeSwitch IC will operate in self-supply mode wherein the BPL and BPH supplies are drawn internally through the device.

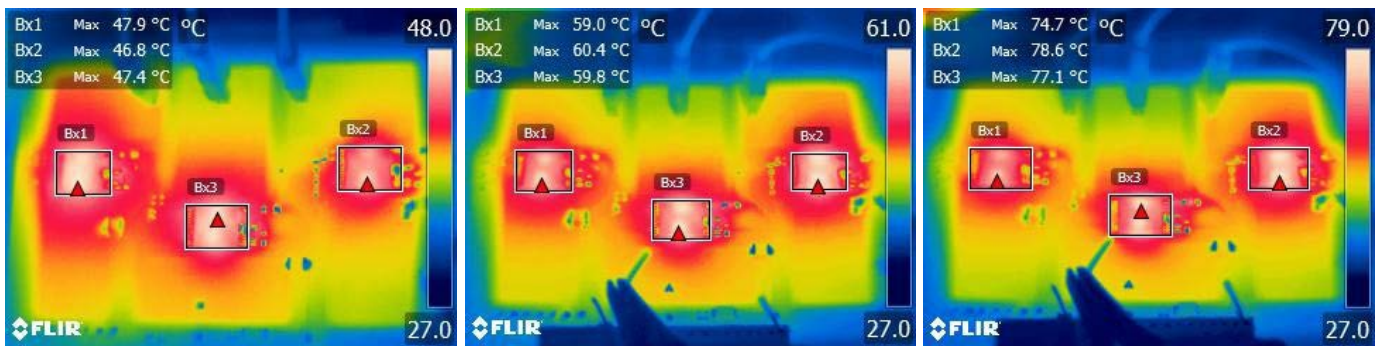
The schematic diagram is accessible from the design example document, "RD-853 – 300 W High Thermal Performance 3-Phase Inverter Using BridgeSwitch Motor Drive and LinkSwitch-TN2". It is available for download at <https://motor-driver.power.com/products/bridgeswitch-family/bridgeswitch/>.

Test Results

I. Triangular PCB Configuration

The thermal scans shown in Figure 9 depict on-board device thermal performance after 15 minutes of soak time each at 100 W, 200 W, and 300 W inverter output power at an ambient temperature of 27 °C.

External Supply Mode



a) 100 W Inverter Output Power

b) 200 W Inverter Output Power

c) 300 W Inverter Output Power

Self-Supply Mode



d) 100 W Inverter Output Power

e) 200 W Inverter Output Power

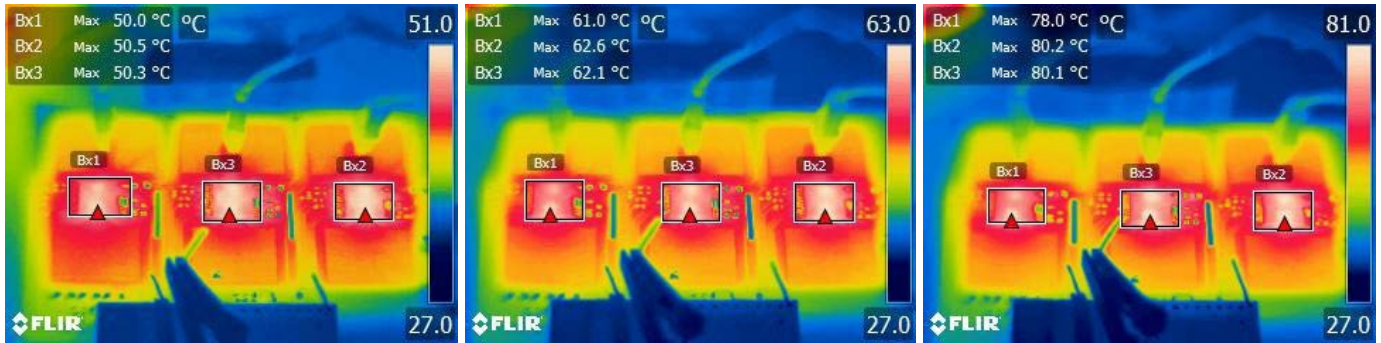
f) 300 W Inverter Output Power

Figure 9. Thermal Device Scans (Triangular PCB Configuration).

II. Slotted Linear PCB Configuration

The thermal scans shown in Figure 10 depict on-board device thermal performance after 15 minutes of soak time each at 100 W, 200 W, and 300 W inverter output power at an ambient temperature of 27 °C.

External Supply Mode



a) 100 W Inverter Output Power

b) 200 W Inverter Output Power

c) 300 W Inverter Output Power

Self-Supply Mode



d) 100 W Inverter Output Power

e) 200 W Inverter Output Power

f) 300 W Inverter Output Power

Figure 10. Thermal Device Scans (Slotted Linear PCB Configuration).

III. PCB Configuration Comparison

Table 1 summarizes the average device case temperature rise above an ambient temperature of 27 °C at various loading conditions. Given below is the formula used to compute the values. Figure 11 plots the data presented in Table 1.

$$\text{Average Trise above } T_{\text{AMB}} = \left(\frac{T_{\text{CASE } 1} + T_{\text{CASE } 2} + T_{\text{CASE } 3}}{3} \right) - T_{\text{AMB}}$$

Where:
 Average Trise = Average temperature rise
 T_{AMB} = Ambient temperature
 $T_{\text{CASE } 1}$ = BridgeSwitch 1 case temperature
 $T_{\text{CASE } 2}$ = BridgeSwitch 2 case temperature
 $T_{\text{CASE } 3}$ = BridgeSwitch 3 case temperature

	Supply Mode	Configuration	Inverter Ouput Power		
			100 W	200 W	300 W
Average Temperature Rise above Ambient Temperature (27 °C)	External	Triangular	20.4 °C	32.7 °C	49.8 °C
		Slotted Linear	23.3 °C	34.9 °C	52.4 °C
		ΔTrise	2.9 °C	2.2 °C	2.6 °C
	Self	Triangular	27.2 °C	38.6 °C	55.0 °C
		Slotted Linear	28.6 °C	40.0 °C	56.5 °C
		ΔTrise	1.4 °C	1.4 °C	1.5 °C

Table 1. Average Temperature Rise above Ambient Temperature (27 °C).

Note: ΔTrise = Average Temperature Rise Difference at 100 W, 200 W, and 300 W

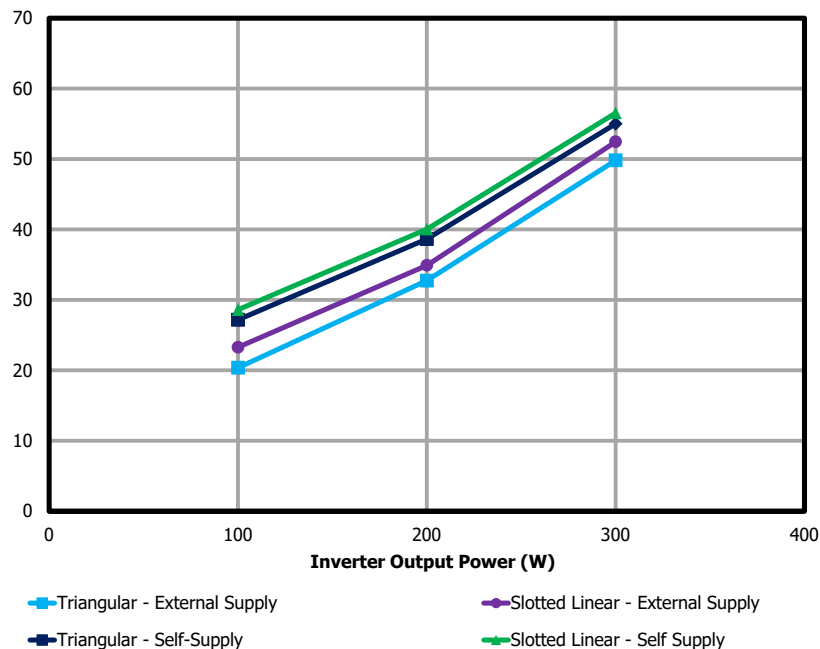


Figure 11. Average Temperature Rise above 27 °C vs. Inverter Output Power.

Based on the values in Table 1, the average case temperature rise for the devices in a triangular PCB configuration is slightly lower for the same operating conditions. There is a maximum difference in average temperature rise of 2.9 °C when operating in external supply mode and 1.5 °C during self-supply mode. From the thermal scans provided in Figures 9 and 10, the maximum temperature variation between adjacent devices is 2.4 °C for the triangular PCB configuration (at 300 W, external and self-supply mode) and 2.1 °C for the slotted linear PCB configuration (at 300 W, external supply mode). These show that for the triangular and slotted linear PCB configurations, the device heat distribution is relatively equal.

The differences in device case temperature are caused by small discrepancies (about 20 mA) in the motor winding phase currents. The heat originating from the devices remains in the surrounding area based on the thermal scans, effectively minimizing heat sharing and preventing adjacent devices from affecting the temperature of the middle IC.

Conclusion

The placement of the device plays a significant role in determining the board size and thermal performance of the BridgeSwitch devices. The triangular PCB configuration results in a close temperature match between devices and lower case temperatures at the expense of a larger board size. The slotted linear PCB configuration allows a reduction in board size critical in applications with tight PCB space requirements while also maintaining a close temperature match between devices. However, there is a minimal increase in case temperature caused by the smaller PCB copper area, as well as a decrease in PCB mechanical strength as a result of the slots on the board.

Due to its comparable thermal performance to the triangular PCB configuration, the slotted linear PCB configuration offers flexibility in device placement, thereby providing more options for applications requiring a more compact PCB layout.

Notes

Revision	Notes	Date
A	Initial release.	11/20

For the latest updates, visit our website: www.power.com

Power Integrations reserves the right to make changes to its products at any time to improve reliability or manufacturability. Power Integrations does not assume any liability arising from the use of any device or circuit described herein. POWER INTEGRATIONS MAKES NO WARRANTY HEREIN AND SPECIFICALLY DISCLAIMS ALL WARRANTIES INCLUDING, WITHOUT LIMITATION, THE IMPLIED WARRANTIES OF MERCHANTABILITY, FITNESS FOR A PARTICULAR PURPOSE, AND NON-INFRINGEMENT OF THIRD PARTY RIGHTS.

Patent Information

The products and applications illustrated herein (including transformer construction and circuits external to the products) may be covered by one or more U.S. and foreign patents, or potentially by pending U.S. and foreign patent applications assigned to Power Integrations. A complete list of Power Integrations patents may be found at www.power.com. Power Integrations grants its customers a license under certain patent rights as set forth at www.power.com/ip.htm.

Life Support Policy

POWER INTEGRATIONS PRODUCTS ARE NOT AUTHORIZED FOR USE AS CRITICAL COMPONENTS IN LIFE SUPPORT DEVICES OR SYSTEMS WITHOUT THE EXPRESS WRITTEN APPROVAL OF THE PRESIDENT OF POWER INTEGRATIONS. As used herein:

A Life support device or system is one which, (i) is intended for surgical implant into the body, or (ii) supports or sustains life, and (iii) whose failure to perform, when properly used in accordance with instructions for use, can be reasonably expected to result in significant injury or death to the user.

A critical component is any component of a life support device or system whose failure to perform can be reasonably expected to cause the failure of the life support device or system, or to affect its safety or effectiveness.

Power Integrations, the Power Integrations logo, CAPZero, ChiPhy, CHY, DPA-Switch, EcoSmart, E-Shield, eSIP, eSOP, HiperPLC, HiperPFS, HiperTFS, InnoSwitch, Innovation in Power Conversion, InSOP, LinkSwitch, LinkZero, LYTSwitch, SENZero, TinySwitch, TOPSwitch, PI, PI Expert, PowiGaN, SCALE, SCALE-1, SCALE-2, SCALE-3 and SCALE-iDriver, are trademarks of Power Integrations, Inc. Other trademarks are property of their respective companies. ©2020, Power Integrations, Inc.

Power Integrations Worldwide Sales Support Locations

World Headquarters

5245 Hellyer Avenue
 San Jose, CA 95138, USA
 Main: +1-408-414-9200
 Customer Service:
 Worldwide: +1-65-635-64480
 Americas: +1-408-414-9621
 e-mail: usasales@power.com

China (Shanghai)

Rm 2410, Charity Plaza, No. 88
 North Caoxi Road
 Shanghai, PRC 200030
 Phone: +86-21-6354-6323
 e-mail: chinasales@power.com

China (Shenzhen)

17/F, Hivac Building, No. 2, Keji Nan
 8th Road, Nanshan District,
 Shenzhen, China, 518057
 Phone: +86-755-8672-8689
 e-mail: chinasales@power.com

Germany (AC-DC/LED Sales)

Einsteinring 24
 85609 Dornach/Aschheim
 Germany
 Tel: +49-89-5527-39100
 e-mail: eurosales@power.com

Germany (Gate Driver Sales)

HellwegForum 1
 59469 Ense
 Germany
 Tel: +49-2938-64-39990
 e-mail: igbt-driver.sales@power.com

India

#1, 14th Main Road
 Vasanthanagar
 Bangalore-560052 India
 Phone: +91-80-4113-8020
 e-mail: indiasales@power.com

Italy

Via Milanese 20, 3rd. Fl.
 20099 Sesto San Giovanni (MI) Italy
 Phone: +39-024-550-8701
 e-mail: eurosales@power.com

Japan

Yusen Shin-Yokohama 1-chome Bldg.
 1-7-9, Shin-Yokohama, Kohoku-ku
 Yokohama-shi,
 Kanagawa 222-0033 Japan
 Phone: +81-45-471-1021
 e-mail: japansales@power.com

Korea

RM 602, 6FL
 Korea City Air Terminal B/D, 159-6
 Samsung-Dong, Kangnam-Gu,
 Seoul, 135-728, Korea
 Phone: +82-2-2016-6610
 e-mail: koreasales@power.com

Singapore

51 Newton Road
 #19-01/05 Goldhill Plaza
 Singapore, 308900
 Phone: +65-6358-2160
 e-mail: singaporesales@power.com

Taiwan

5F, No. 318, Nei Hu Rd., Sec. 1
 Nei Hu Dist.
 Taipei 11493, Taiwan R.O.C.
 Phone: +886-2-2659-4570
 e-mail: taiwansales@power.com

UK

Building 5, Suite 21
 The Westbrook Centre
 Milton Road
 Cambridge
 CB4 1YG
 Phone: +44 (0) 7823-557484
 e-mail: eurosales@power.com